

Hippos (Sussita) Excavations 2011 – 12th Season Daily Log + Drawing

Date: 18 July 11 Area: NIP Manager: Schuler

Squares	XX99	XX/YY0	F10
Loci	1907	1930	1931
Baskets	2441	2442	2443
Walls	1888, 1923		
Floors	1934		

1) Northeast Zone

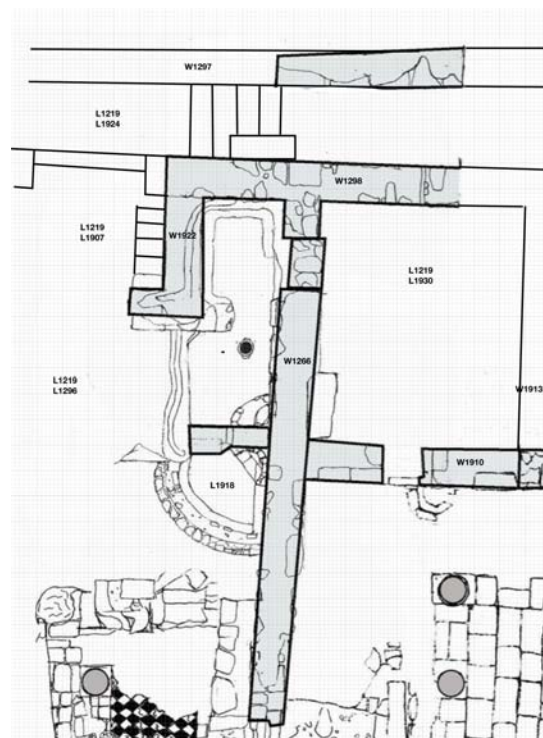
a) Continued work in Square XX99.

- i) Goal = Clarify more of Cardo 4 to the north and a possible entrance into the garden to the west.
- ii) Basket = 2441
- iii) Starting elevation = 129.54
- iv) Ending elevation = 129.54 (areas higher due to slough from tractor activity)
- v) Soil is Horizon B
- vi) Used tractor to remove heavy stones from NE corner of square. Tried to create a shelf around the corner.
- vii) Removed a column drum with base (#552, Total length: 88 cm, Column diameter: 33 cm, Base diameter: 38 cm, Base height: 8 cm)
- viii) As soil and stone continue to slide into the square east of the threshold, the area was closed to future excavation as too dangerous.

b) Continued work in Square XX/yy0.

- i) Goal = Excavate NE hall of peristyle court
- ii) Basket = 2442 (Large pieces of Beisan jars; gritty cooking ware; 450 CE – 650 CE)
- iii) Starting elevation = 130.19
- iv) Ending elevation = 130.07
- v) Soil is Horizon B.

- vi) Getting closer to floor level (low level is 130.01). Soil layers seem to be lacking plaster.
 - vii) A platform of stones next to the north wall is left in place temporarily, although it may be tumble (elevation 130.15)
 - viii) A coin was recovered in the fill just above floor level. Diameter 2.5 cm. Heavily effaced, likely Roman provincial coin of the third century.
- c) Conservation work continued on the fountain and walls in YY99 and ZZ99.



2) Southwest Zone

a) Continued work in Square F10.

- i) Goal = identify the structure and function of Building Complex Alpha
- ii) Basket = 2443 (Large pieces of Beisan jars; gritty cooking ware (R with L.1928); Indicative Wares LRC (Hayes, form 10); Residual Few EROM; 500 CE - 700 CE
- iii) Starting elevation = 128.41
- iv) Ending elevation = 128.24
- v) Soil is Horizon B.

- vi) Recovered numerous metal nail fragments from the fill (#553 4.8 cm; #554 4.5 cm; #555 6 cm; #556 w head 6.5 cm; #557 7.5 cm; #558 3.6 cm; #559 5.5 cm; #563 2.5 cm; #564 bent, 4.55 cm from head to bent, 2.5 cm to tip; #566 6.5 cm).
- vii) #560 is two items found together so given the same number. The first one is a Metal Eye, Width at eye: 3.2 cm; Width at tip: 2 cm; Diameter of the hole at its widest points: 1.5 cm x 1.7 cm. The second item is a Metal Half Circle> Use is hard to determine, may have been a metal ring on a door or a drawer. It has a protruding knob on the inside. Diameter at outer edges: 6 cm; Diameter at inner edges: 3 cm; Thickness: 1.5 cm; Thickness at knob : 3.5 cm
- viii) #561 is an Iron Fragment (eye?). It is shaped like an eye but where the hole would be is too corroded to know for sure. Length: 8 cm; Width at eye: 3 cm; Width at other end: 2 cm; Width in the middle: 1.5 cm.
- ix) #562 is a single green bead that appears to be carved out of stone. It has a small central hole that goes all the way through the bead. Diameter: 1.4 cm, Diameter of hole: .7 cm, Thickness: 1.1 cm.
- x) #565 is a pestle Length: 6 cm, Width at ends: 5 cm, Width in center: 4 cm.
- xi) #568 is an iron ring with a hole; Diameter of outer edges: 1.6 cm, Thickness: .5 cm
- xii) Cleared the threshold in W1923 and identified crude stone floor in front of it.
- xiii) Working out from corner where floor is known.
- xiv) Two buckets of pottery sherds were extracted during excavation.
- xv) Cleared top of W1888 in SE corner of the square. It seems that some of the wall stones were carelessly piled on top of surviving ashlar, possibly as part of later construction inside previous ruins.
- xvi) Uncovered about a third of the floor (F1934) in F10.

